

Yagoona Public School

LANDSCAPE ARCHITECTURAL PACKAGE



CONRAD GARGETT
Brisbane Studio
Level 26 / 240 Queen Street Brisbane Qld 4000
Telephone +61 7 3229 3555 Facsimile +61 7 3221 7878
mail@conradgargett.com.au
www.conradgargett.com.au
Nomintated Architect: Bruce Wolfe NSW Reg. 6969

Contents

| | |
|-------|--------------------------------------|
| | Cover Page |
| | Contents |
| LA001 | Design Rationale |
| LA002 | Learning Experiences |
| LA003 | Landscape Design Intent |
| LA004 | Landscape Finishes Schedule |
| LA005 | Landscape Master Plan |
| LA006 | Landscape Surface Finishes - Sheet 1 |
| LA007 | Landscape Surface Finishes - Sheet 2 |
| LA008 | Landscape Sections - Sheet 1 |
| LA009 | Landscape Sections - Sheet 2 |
| LA010 | Hardscape Materials Palette |
| LA011 | Softscape Materials Palette |
| LA012 | Tree Retention and Removal Plan |

| Revision | Description | Issue Date | Prepared By | Approved By |
|----------|--|------------|-------------|----------------------------|
| A | Preliminary Schematic Design | 14/07/2017 | Simon Lacey | Katharina Nieberler-Walker |
| B | Preliminary Development Application | 31/07/2017 | Simon Lacey | Katharina Nieberler-Walker |
| C | For DoE Sign Off | 03/08/2017 | Simon Lacey | Katharina Nieberler-Walker |
| D | DA Issue | 13/09/2017 | Simon Lacey | Katharina Nieberler-Walker |
| E | DA Issue (Building Adjustments and Associated Changes) | 23/10/2017 | Simon Lacey | Katharina Nieberler-Walker |

This report is produced by CONRAD GARGETT for NSW Education.

School Background

Yagoona Public School is a centre for lifelong learning in our culturally diverse community. It provides enriching learning experiences for all students, ensuring that every student is happy and safe as they engage with interesting and meaningful learning programs, thoughtfully prepared by highly professional teachers. The school has over 20 classes and includes a Support Education Unit of four classes for students with special needs.

The School is located on the Hume Highway, bus stops and trains station nearby. The school has extensive grassed playgrounds and four large covered outdoor learning areas (COLAs) which are used every day for a range of activities including fitness and games, dance, table tennis, structured and unstructured play activities and assemblies. The latest new school building additions include the Library, hall with COLA and canteen, expanding the learning opportunities for our students and brought more parents and community into the school.

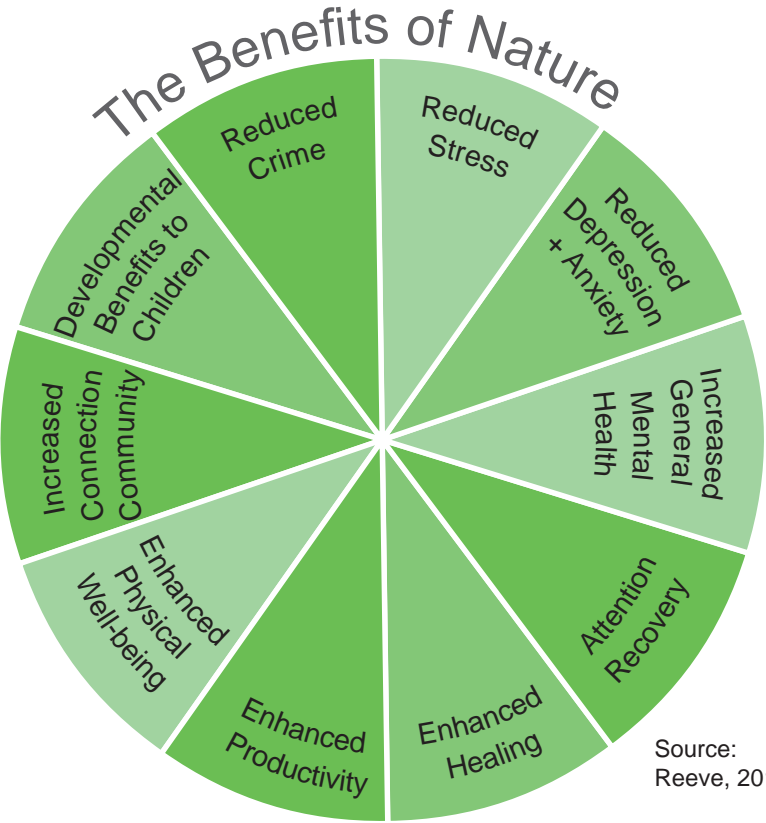
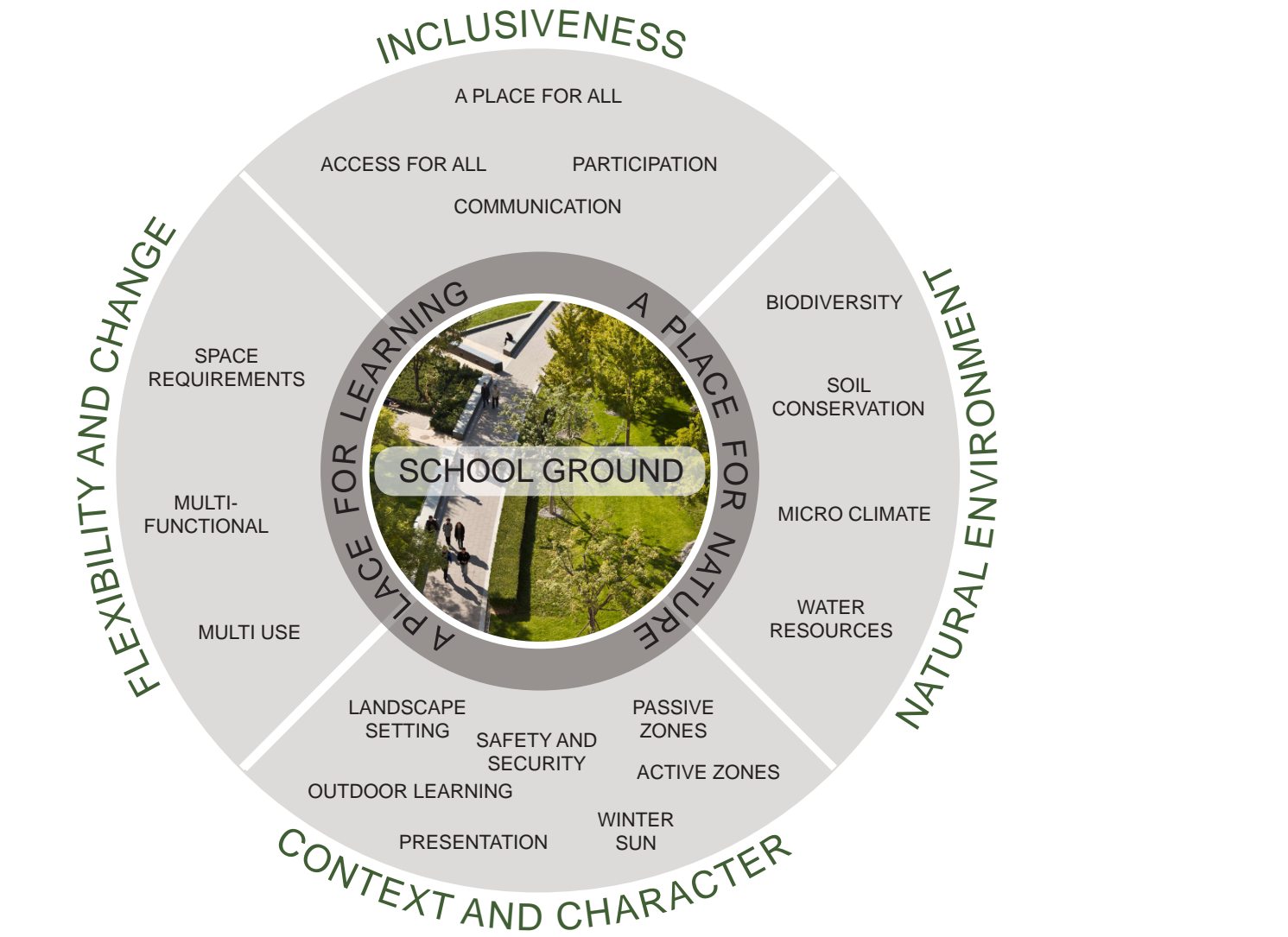
Yagoona Public School is partner with Sydney University in the Compass Social Inclusion Program and students visit Sydney University for a range of educational activities including sport, drama, history and science.

Language schools in Arabic occur every Friday night and in Macedonian every Saturday morning and welcome families from schools other than Yagoona.

Our school has links with Bankstown Local Government Area through the Bankstown Hub which connects our students and their families with the great range of support services available. Regular parent meetings, information sessions and morning teas aim to encourage greater parent engagement with our school.

http://www.yagoonapublicschool.com/index.php?option=com_content&view=article&id=1&Itemid=138

THE LANDSCAPE DESIGN LENS



The intent of the design is to create a landscape that will provide both a PLACE FOR LEARNING and a PLACE FOR NATURE for all staff, students, teachers, guardians and visitors.

DESIGN OBJECTIVE - “C.A.R.E.”

CREATE landscape spaces that encourage interaction and communication among children and that is conducive to meeting or gathering for learners and staffs of different ages, social and cultural background.

ACTIVATE multi-functional and flexible spaces that can accommodate varied functions and activities that will allow children to explore, engage and reach beyond their comfort zone.

REMAKE outdoor learning environments that enhance the well-being of children and staffs, forms integral part of teaching and learning, and reinforces positive behaviour among children / learners such as spaces for reflection and taking time-out.

ENGAGE learners and staffs in preserving the school’s native bush and green environment by providing a place that showcase the natural environment.



| | | | | | | | | | | |
|--------|-----------------|-----------|--|-------|------------------|-----|----------------|----------|------|-----------------------|
| CLIENT | PROJECT MANAGER | ARCHITECT | DRAWING | NORTH | DRAWING | REV | DESCRIPTION | DATE | APPD | DRAWING NUMBER-REV |
| | | | Yagoona Public School 425 Hume Highway, Yagoona NSW | | Design Rationale | A | Preliminary SD | 14/07/17 | KNW | |
| | | | INTERNAL PROJECT No: 16 460 | | | B | Pre DA | 31/07/17 | KNW | |
| | | | DATE: SEPTEMBER 2017 | | | C | DoE Sign off | 03/08/17 | KNW | |
| | | | | | | D | DA | 13/09/17 | KNW | |
| | | | | | | E | DA revised | 23/10/17 | KNW | YA-01-SD-LA-DR-0001-E |



Learning Experiences

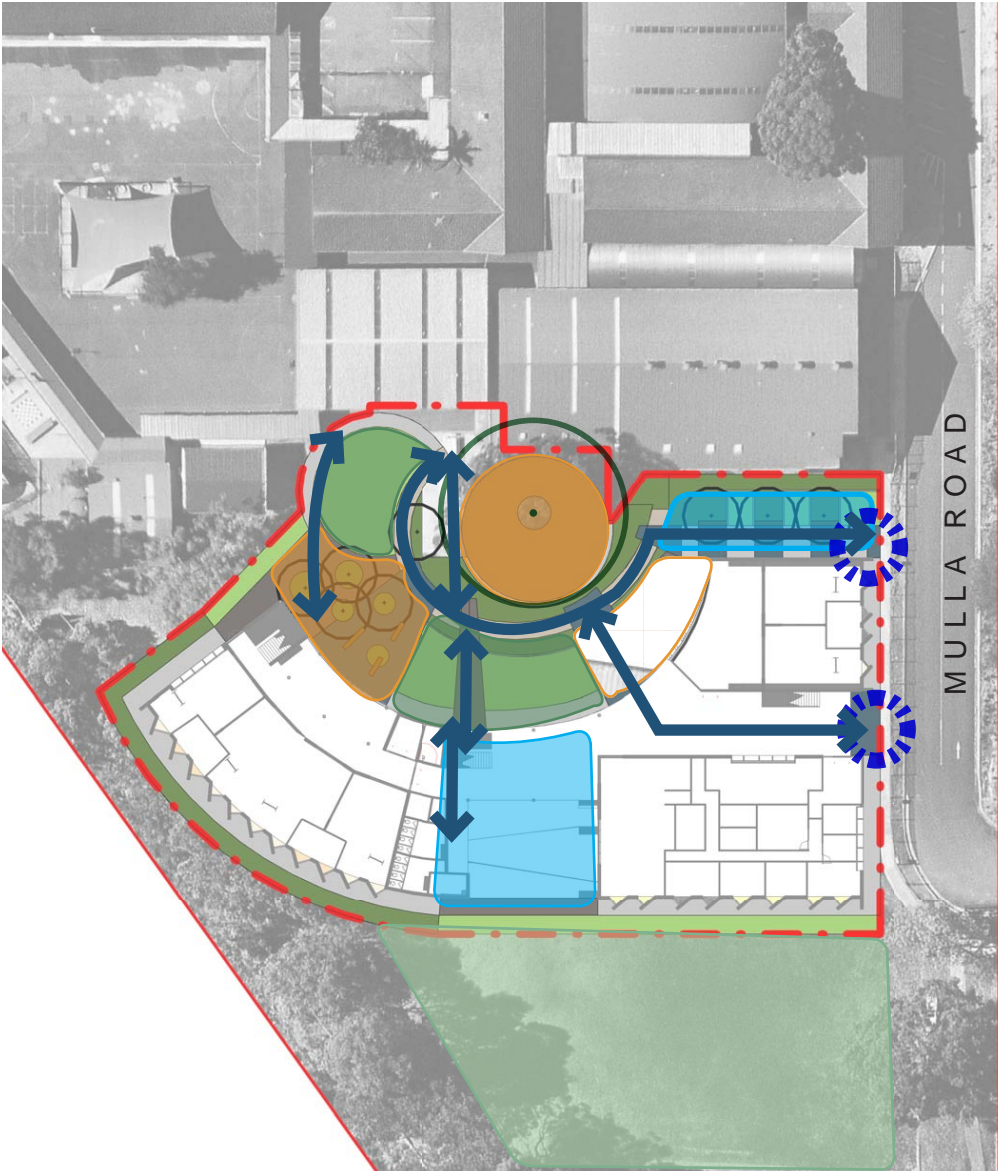
- OPPORTUNITIES FOR MANY THINGS
- DISCOVERY
- STIMULATING
- PARTICIPATION
- RELAXATION
- GEOGRAPHY
- GEOMETRY
- CALCULATIONS
- ACADEMICS
- CULTURE
- TECHNOLOGY
- RESOURCES
- MAPPING
- DIGITAL MEDIA
- ARTS
- AMENITY
- INCLUSIVE
- TIME OF DAY
- NUMBERS
- WELL-BEING
- SOCIAL SKILLS
- POETRY
- EXPERIMENTS
- SPORTS
- COMMUNITY EVENTS
- DIMENSIONS
- OUTDOOR ACTIVITIES
- PASSIVE AND ACTIVE RECREATION
- COLOUR
- HABITAT
- REFUGE
- ANIMALS AND PLANTS
- APPRECIATION
- MUSIC & DANCE
- EXPRESSION

Landscape Design Intent

Design intent for Yagoona Public School is to create and explore an environment that offers teaching staff and students with flexible spaces that best meet teaching, learning and play requirements.

Key areas of focus within the proposed design, is the existing focal tree. Circular in form to link inside to outside. Also include a suitable school entry that creates a sense of arrival and sense of place that fosters what the values that Yagoona Public School promotes.

The central plaza and Lawn will be functional, practical and adaptable to outdoor learning whilst overlooking and connecting to Play areas and 'green space' .



Open grassed areas / activity lawns for varied functionalities and programs



Retain existing trees make it the Feature in Design



Plaza Space - with seating and for time out and relaxation



Outdoor learning areas with small and larger group seating areas

Landscape Finishes Schedule and Legend

Key Plan



| | Materials Schedule - Softscape | | | | |
|-----|--------------------------------|-----------------------|--|----------------------|--------------------------------|
| | Surface Finish | Type | Description | Mulch | Plant Stock/Turf |
| PA1 | PA1 | PA1 - Planting Type 1 | Amenity Planting Areas - 300mm imported topsoil on 150mm cultivated subgrade | 100mm Imported Mulch | Planting as per Planting Plans |
| PA2 | T1 | T1 - Turf 1 | Amenity Turf - 100mm imported turf topsoil on 150mm cultivated subgrade | N/A | Wintergreen Couch |

| Materials Schedule - Hardscape | | | | | | | |
|--------------------------------|--------|-------------------|-----------------------------------|-------------|--|--|---------------------------|
| Surface Finish | Type | Pavement Type | Supplier (or approved equivalent) | Size | Colour | Sealer | |
| DRAIN | DRAIN | DRAIN | To Civil Engineers detail | N/A | N/A | N/A | N/A |
| P1 | P1 | P1-Plain broom | Broom finished | N/A | 125mm N32 SL 72 | Plain grey concrete - Standard aggregate | N/A |
| P2b | P2b | P2b- Pastachio | Broom finished | N/A | 125mm N32 SL 72 | CCS CCS Pistachio | 2 Coats - CCS Streetscape |
| P2c | P2c | P2c - Gothic Blue | Broom finished | N/A | 125mm N32 SL 72 | CCS Canvas | 2 Coats - CCS Streetscape |
| P2h | P2h | P2h-Black | Broom finished | CCS | 125mm N32 SL 72 | CCS Black | |
| TGSI 1 | TGSI 1 | P5 Tactiles | Tactile Indicator - Unit paver | Chelmsstone | 400 x 400 x 40mm | TBC | N/A |
| P12 | P12 | P12 Timber Deck | Timber deck | N/A | Refer Detail - 35X135mm Spotted Gum standard Grade Decking boards on frame to structural engineers detail. | TBC | 2 Coats - Cutek 'Extreme' |
| ST2 | ST2 | ST2-Black | Broom finished Stairs | CCS | 150mm N32 SL 82 | CCS Black - Standard aggregate / Formed riser and Broom Finish Tread | 2 Coats - CCS Streetscape |
| ST3 | ST3 | ST3 - Gothic Blue | Broom finished Stairs | CCS | 150mm N32 SL 82 | CCS 'Gothic Blue' - Standard aggregate / Formed riser and Broom Finish Tread | 2 Coats - CCS Streetscape |

| Materials Schedule - Edging | | | | |
|-----------------------------|--------------------|-----------------------------------|--------------------------|---------------|
| CODE | Edge Type | Supplier (or approved equivalent) | Size | Colour |
| CE | CE - Concrete Edge | N/A | 150mm Refer Civil detail | Concrete Edge |

| Materials Schedule - Walls and Fencing | | | |
|--|--------|---|-------|
| Type | Symbol | Description | Width |
| SW1 | SW1 | 2000x500x500mm Sandstone blocks | 500 |
| W3 | W3 | 320mm high x 400mm Concrete Insitu wall - plain grey concrete - class 2 concrete. | 400 |

LEGEND

- 1 Formalised entry from Mulla Road
- 2 Sensory garden
- 3 Retained existing decking (modified circular form)
- 4 Informal Learning space
- 5 Multi-purpose Lawn
- 6 Outdoor learnign Space
- - - Landscape Scope of Work
- Property Boundary

